



A WORLD LEADER IN DIGITAL EXPLORATION

Corporate Presentation

TSXV: WIN

July 2020

WINDFALL GEOTEK

DISCLAIMER

This presentation includes certain statements that may be deemed forward looking. All statements in this discussion, other than statements of historical fact, which address future opportunities, potential, activities and events or developments that the Company expects, are forward looking statements.

Such forward-looking statements include, without limitation: **(i)** estimates of future mineral prices, supply, demand and/or production projections; **(ii)** estimates of future cash costs; **(iii)** estimates of future capital expenditures; **(iv)** estimates regarding timing of future identification, development, construction, production or closure activities; **(v)** statements regarding future exploration results; **(vi)** statements regarding cost structure, project economics, or competitive position, **(vii)** statements regarding application of advanced technologies including references to algorithms, artificial intelligence and/or machine learning, and; **(viii)** statements comparing the Company's impact towards the discovery of mines, projects or metals.

COMPANY EXPECTATIONS

Although the Company believes the expectations expressed in such forward looking statements are based on reasonable assumptions, such statements are not guarantees of future performance and actual results or developments may differ materially from those in the forward looking statements. Factors that could cause actual results to differ materially from those in forward looking statements include market prices, exploitation and exploration successes, continued availability of capital and financing, and general economic, market or business conditions. Investors are cautioned that any such statements are not guarantees of future performance, that the Company expressly disclaims any responsibility for revising or expanding the forward-looking statements to reflect actual results or developments, and that actual results or developments may differ materially from those projected, in the forward-looking statements, except as required by law.

PROVEN TECHNOLOGY AROUND THE GLOBE



Over 15 years in-market with over 90 projects successfully completed.



From gold, kimberlites, copper, zinc, nickel, silver, REE, and more.



In Australia, Brazil, Burkina Faso, Chile, Dominican Republic, Haiti, Mexico, New Brunswick, Newfoundland, Ontario, Quebec and Tanzania



Windfall Geotek's CARDS platform has an enviable record of repeated success with over 32 discoveries.



The Team

An experienced group of individuals with extensive knowledge in AI driven by a passion of making a difference.

THE TEAM

CHAIRMAN

DINESH KANDACHATHA (March 2019)

Dinesh has over 20 years experience in security start-ups (TSX-PAT-Patriot One Technologies) and early-stage companies, having raised in excess of \$100M dollars equating over \$1B in shareholder value. He has overseen multiple IPOs and acquisitions, serving as an officer or director of many successful technology companies.



MICHEL FONTAINE(January 2005)

Michel has over 30 years experience within the financial and mining industries. Joined the company in 2005 as VP, Business Development. Previous positions include serving as VP in the Forex exchange market and as a Financial advisor at a major Canadian securities firm focused on the mining sector.



Reputable Geologists, Geophysicist, Data miners, Business Analysts, Statisticians etc.

Windfall Geotek's technology team have been in place since the inception of CARDS(15 years), a major component of our success.

MANAGEMENT



Michel Fontaine

President & CEO

Michel has over 30 years experience within the financial and mining industries. Joined the company in 2005 as VP, Business Development. Previous positions include serving as VP in the Forex exchange market and as a Financial advisor at a major Canadian securities firm focused on the mining sector.



Dinesh Kandanchatha

Chairman

Brings over 20 years of experience in security start-ups and early-stage companies, having raised in excess of \$100M dollars equating over \$1B in shareholder value. He has overseen multiple IPOs and acquisitions, serving as an officer or director of many successful technology companies.

BOARD MEMBERS



Andre Larente

Director

President of Diagnos Inc., previously held senior management positions with companies such as Siemens, Syscan International, Newbridge Networks, Legent, Cognos, Tandem Computers and Honeywell Information Systems.

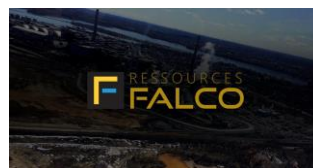


Nathan Tribble

Director

Mr. Tribble, P.Geo. (ON) has over 14 years of professional experience in exploration and mining, with a particular focus on gold and base metal exploration and project evaluation. His current position is Vice President Exploration at Gatling Exploration Inc and past experience includes Senior Principal Geologist for Sprott Mining, Senior Geologist for Bonterra Resources, Jerritt Canyon Gold, Kerr Mines, Northern Gold, Lake Shore Gold and Vale Inco. Mr. Tribble sits on multiple boards affiliated within the mining industry, is registered as a Professional Geoscientist in Ontario and holds a Bachelor of Science degree in Geology from Laurentian University.

Our clients using CARDS AI since 2005





The numbers

Revenues, Investments and trends

THE NUMBERS



Past Results

Close to \$17M in signed service contracts, best year revenue at \$2.4M, to date in excess of CAD \$4.7M invested in CARDS AI Solution. **But that's just the beginning...**



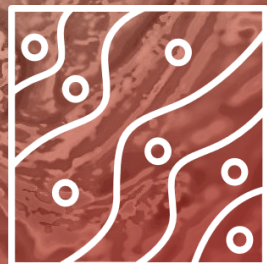
Clients Discoveries

32 discoveries with PROVEN and TANGIBLE results , DE-risking investment have a direct influence on bottom-line performance.



Bright future

Windfall Geotek's new business model is the right answer to current market conditions, on target to easily surpass previous results. To date for the current fiscal year, **860K** in signed contracts, cumulated over 700K in shares with over **1.2M** in the pipeline.



CARDS STEP 1

Database
Preparation

GEOREFERENCED DATA

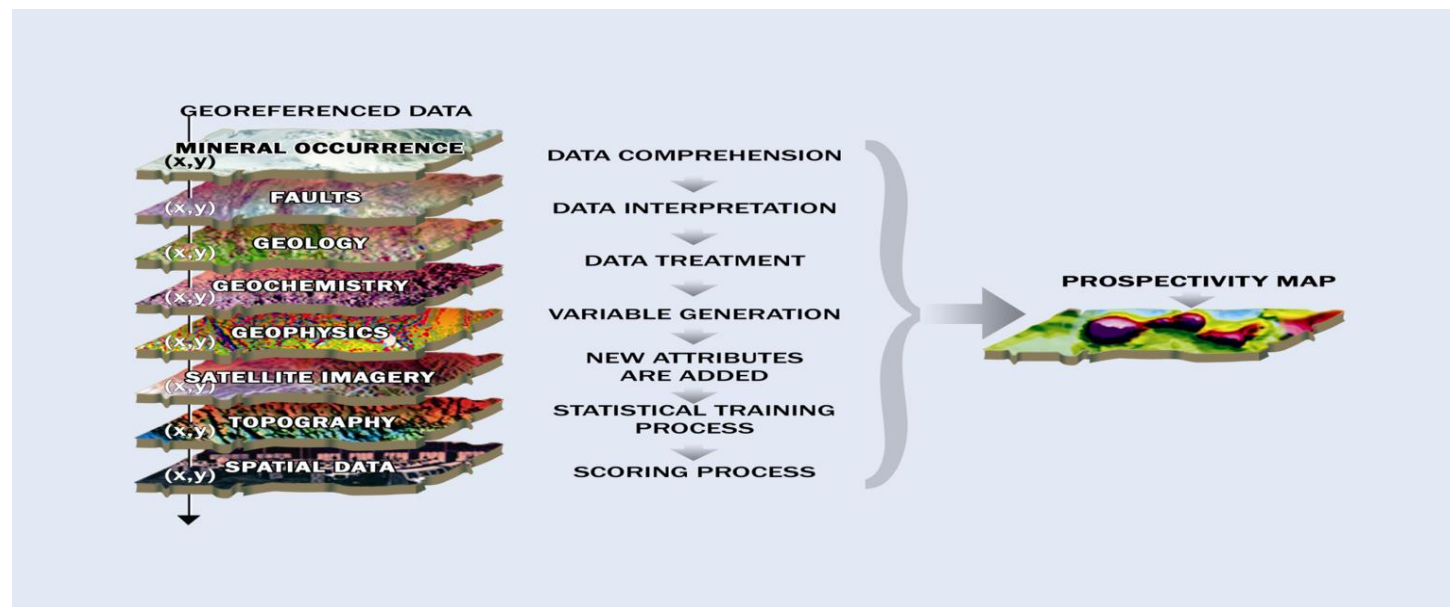
TRAINING POINTS

(ASSAY DATA)

X,Y Coordinates of Known
Drill Holes and rocks sample assays

VARIABLES (GRIDS)

USING PLANES, HELICOPTERS and DRONES



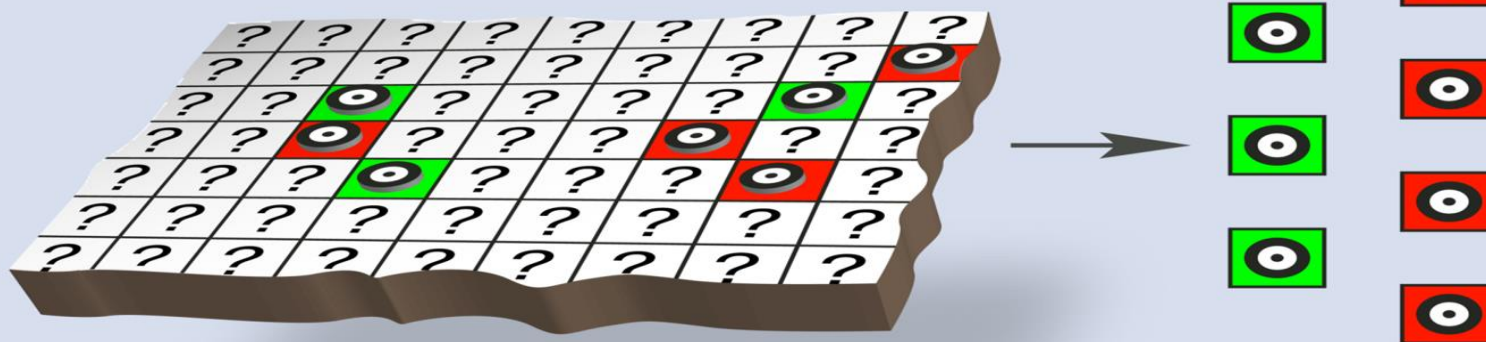


CARDS STEP 2

Database
Preparation

MODEL SETUP

GEOREFERENCED DATA



- Generate a signature that discriminates between known positive training points(assays) and negative training points(assays); Assays provided by diamond drilling and rock samples
- Giving each cell a probability between 0 and 1 that measures its similarity to known positives points.



CARDS STEP 3

CARDS

Artificial Intelligence
(AI) System

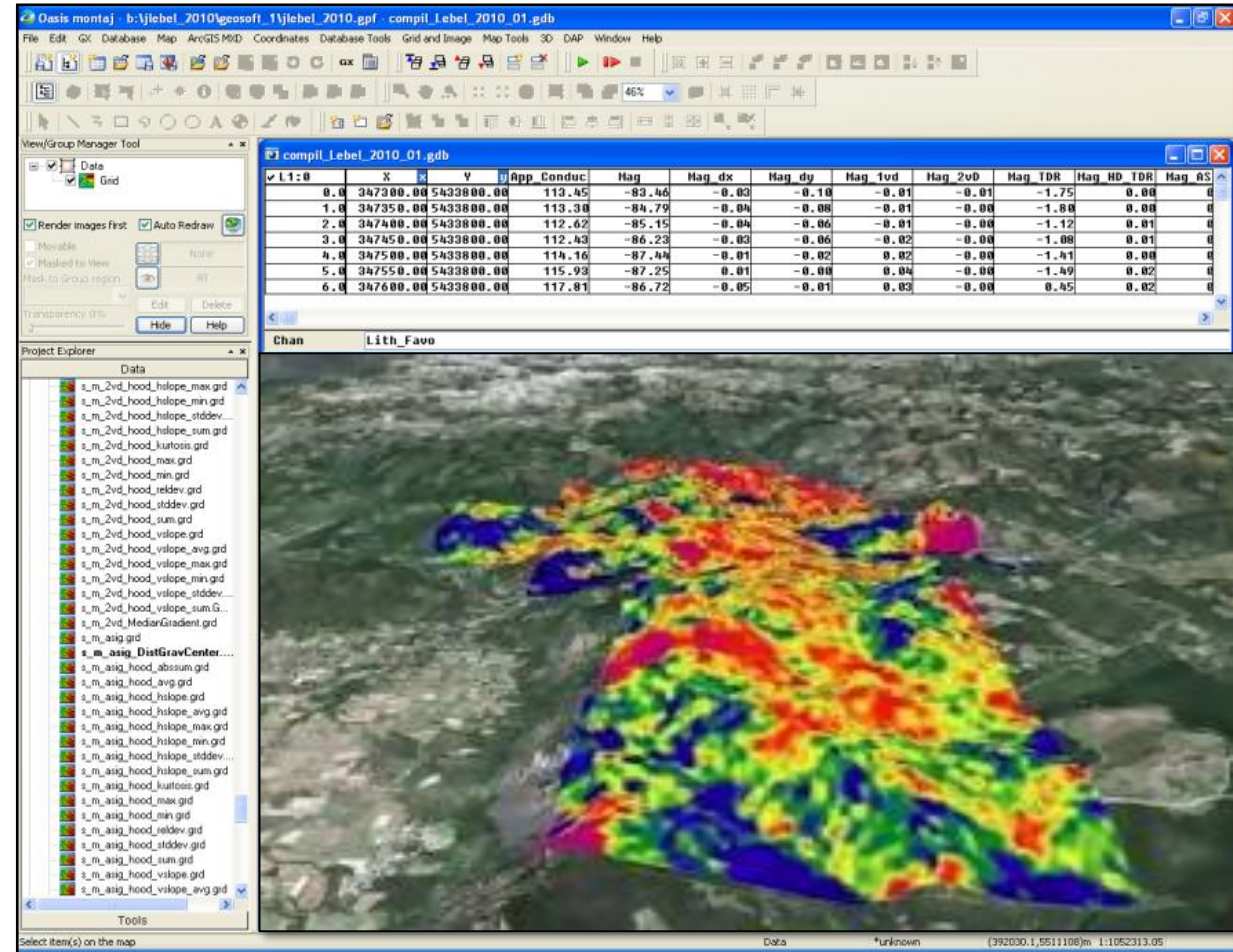
CARDS is a proven tool
that uses AI (machine learning) and Data
Mining for:

- Identification of new areas with a high likelihood of hosting **the same geological context in order to find similar mineralisation**
- Benefiting from the **adaptation of knowledge** of data mining, machine learning and signature recognition such as:
 - Aggregation of georeferenced models (created by Windfall Geotek)
 - C-Cluster (created by Winfall Geotek)
 - Random Forest, Boosting, etc.
 - Deep Learning



CARDS STEP 3

Prediction Scoring Engine



- Scores each cell to find the new pattern signatures detected by AI.
- We are talking about DATA MINING



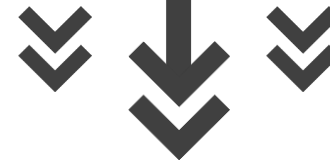
CARDS STEP 4

Scoring
engine, Interpretation
& Presentation

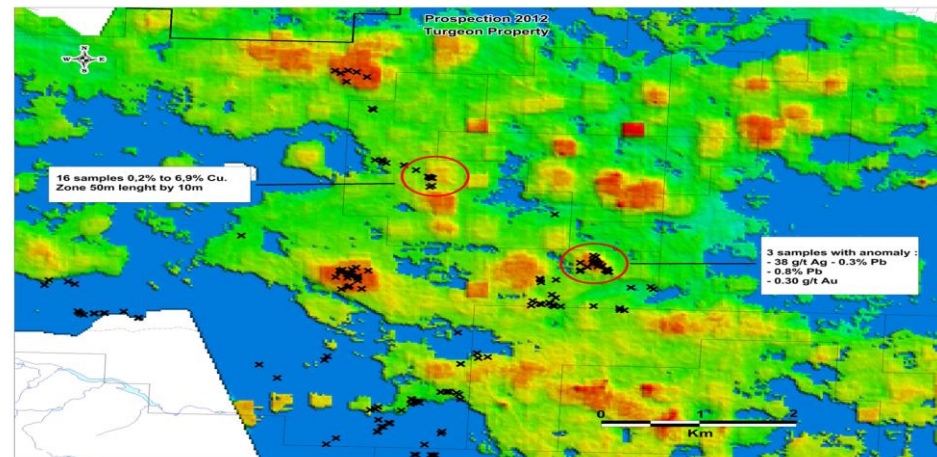
STATISTICAL TRAINING
PROCESS



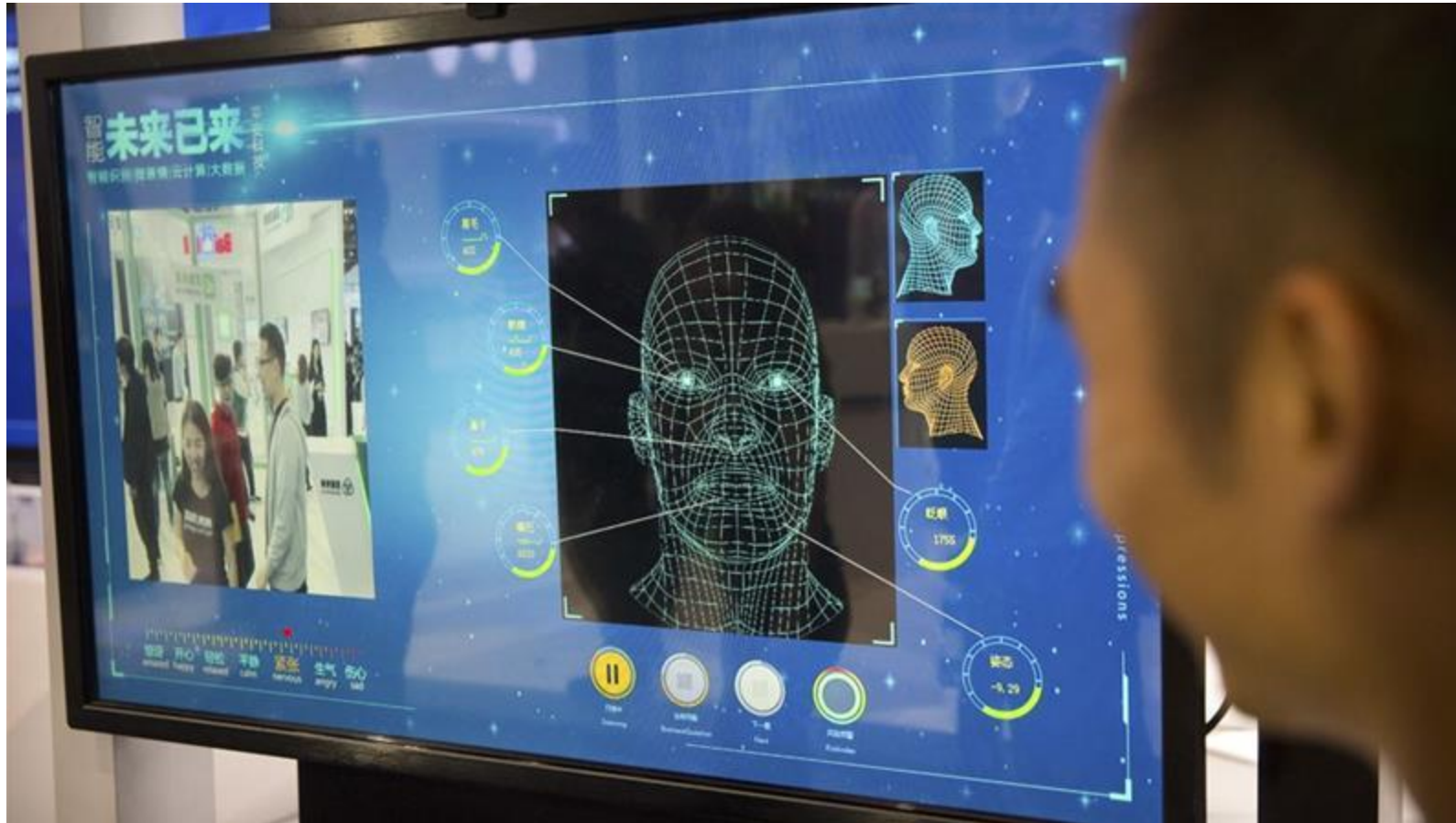
SCORING PROCESS



PROSPECTIVITY MAP



Simply put, imagine your self at the airport



With digital camera they are able to recognize you



.....**WHERE WILL DINESH TAKE US & WHY**

ANTI-PERSONNEL MINE DETECTION

Security division

01 It is estimated that there are **110 million landmines in the ground right now**. An equal amount are stockpiled waiting to be deployed or destroyed

02 Every day approximately **40-55 people around the world lose their lives** or are maimed to an APMs. This means that 15,000 to 20,000 people are hurt or killed worldwide every year. (35-42% are children).

03 Approximately **82 countries around the world** are contaminated by APMs.

04 The average cost of locating and clearing landmines is **US\$ 2.25 / m²** and the average area searched to find one mine is approximately 2,500 m². This leads to a unit location and clearing cost of USD \$ 5,625 per mine = CAD \$7,500

05 The potential market = 100 million Anti-Personnel Mines X \$7,500 CAD = **CAD \$750B**

06 **Greater potential** to employ Drones around borders, mines, towns, etc.....



ANTI-PERSONNEL MINE DETECTION

07 The **complex algorithms** used for mineral exploration can be also adapted for the detection of Anti-Personnel Mines

08 In general all anti-personnel mines **include some metal parts**

09 The magnetic field may be **disturbed by a metal object**

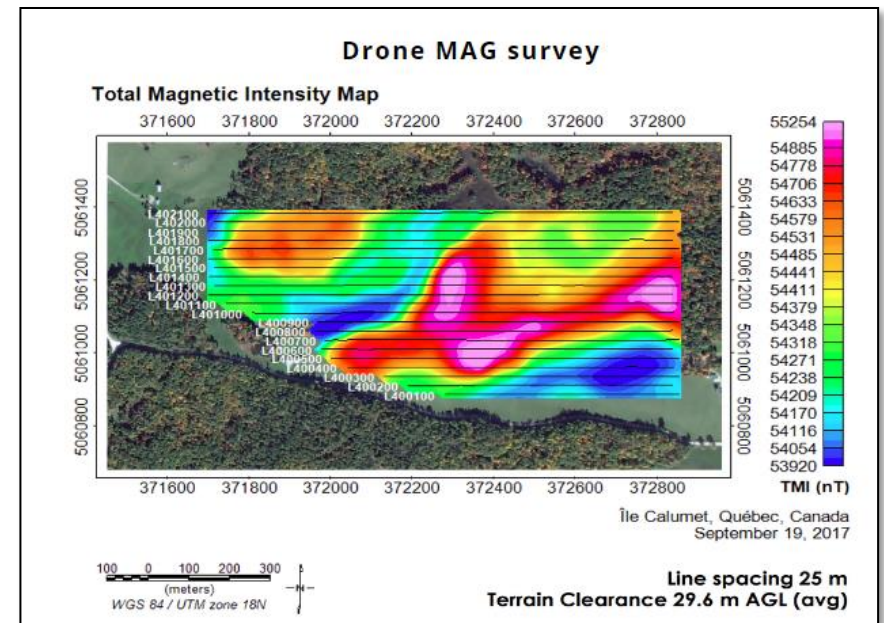
10 The consequence is a **higher power consumption** or a change in the magnetic field

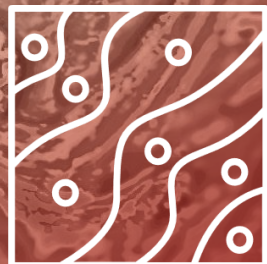
12 The magnetic airborne surveys by drones **using RTK (Real time Kinematic)** to identify these magnetic anomalies in the ground

13 RTK = cm spacing line



Assortment of the most anti-personnel mines





CARDS STEP 1

Database
Preparation

GEOREFERENCED DATA

TRAINING POINTS

(ASSAY DATA)

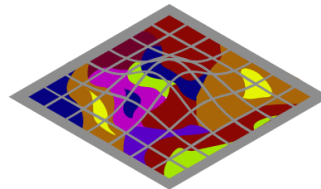


X,Y Coordinates of Known
Anti-Personnel Mines

VARIABLES (GRID)

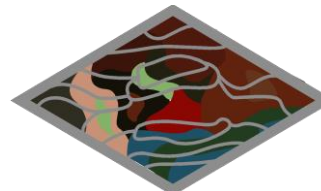
USING DRONES

GEOPHYSICS



- UAV Magnetic Data
- Ground Penetrating Radar (GPR) Data
- Hyperspectral Data
- Infrared Data

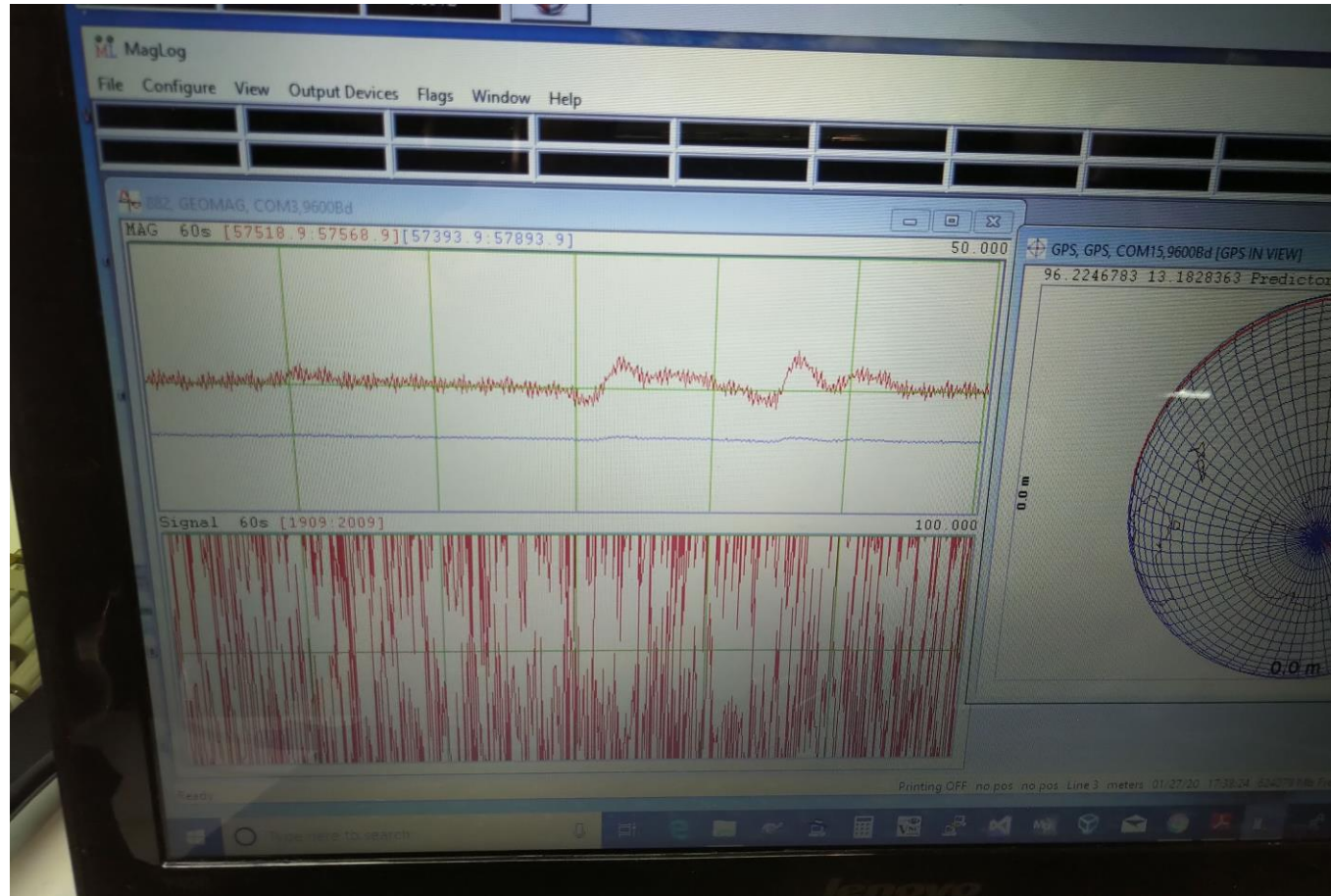
TOPOGRAPHY



- Digital Elevation Model Data
- Lidar Data
- Satellite Imagery

Recent testing results done by Stratus Aeronautics

Airlines/Aviation



TARGET MARKETS



Juniors (and many mid-size) mining companies lack the financial capacity to fund mine development and need to raise additional equity. For this reason, junior companies often sell a promising project to a larger company. Despite their small size, junior companies are responsible for the majority of exploration expenditures worldwide

As equity financing is the typical driver for mineral exploration, Windfall Geotek views junior to mid-size miners as ideal partners to introduce innovative practices and economics in order to propel projects of merit. As such we are seeking to invest in projects with the highest potential



Majors, since most of them are already investing in AI we have identified an opportunity to create **strategic alliances** to help them build their internal capacity in the form of knowledge sharing while work is being conducted on their projects. We are already engaged with a few of the top 10.



Landmines, considering the size of this segment of the market, we are at the stages of identifying primary opportunities such as a multi million dollar project in Yemen.

Projected Revenue 2020

Juniors
\$ Million
\$1.5

Majors
\$ Million
\$1.5

Landmines
TBD

Total +- \$3.0M CAD

Powered by Artificial Intelligence(AI) since 2004

Trading symbol: WIN (TSX Venture)

Staff: A team of 7 devoted, highly educated and experienced individuals including Masters in Business Intelligence, Masters in Computer Sciences, PhD's in Math and AI, PhD's in Geology and Geophysicist

Burn rate: approx. \$50K/month

Shares & Cash:** approx. \$1,500,000 CDN

** (1) BWR Exploration Inc. 1,500,000 (2) Flow Metals Corp 100,000 (3) Pacton Gold Inc.

1,458,333 (4) Playfair Mining Ltd 2000000. (5) Puma Exploration Inc. 700000

(5) Quebec Precious Metals Corporation 568181

Shares outstanding: 82,418,881

Fully diluted: 94,773,702

Board of Directors: Dinesh Kandanchatha Chairman, Michel Fontaine,
Nathan Tribble , André Larente Directors





Best Of All

Our technology continuously delivers increased returns.

There is NO Question.
THIS IS THE FUTURE...
...TODAY

SUMMARY

- 01 Artificial Intelligence Is The Key**
And it keeps on getting smarter everyday
- 02 A Proven Technology**
Over 15 years of service building confidence
- 03 Guaranteed Returns**
The economics are certain. We can prove it.
- 04 Saves Time And Money**
Both near and long term value assured
- 05 Increases Accuracy**
Drill smarter, faster and achieve better outcomes
- 06 Downstream Savings**
More than just finding drill targets, we improve overall project results
- 07 Project Your Future**
Employ the best technology & strategy for success in multiple applications



WIN, UNLOCK the BLUE SKY POTENTIAL of your Investment

Windfall Geotek Inc.

7005 Taschereau Boulevard,
Suite 340, Brossard, Québec, J4Z 1A7

450-678-8882 Ext.222

michel@[windfallgeotek.com](mailto:michel@windfallgeotek.com)

www.windfallgeotek.com

TSXV: WIN

WINDFALL GEOTEK